

STANDARD DUAL MAILBOX PLACEMENT AND PLANTING

MAILBOX PLANTING BED TO CONSIST OF:

1. STEEL EDGE TO BE SET W/ ONLY 1" EXPOSED ABOVE FINISH GRADE; CENTERLINE EDGING TO BE INSTALLED BY FIRST BUILDER INSTALLING A MAILBOX, IF BOTH MAILBOXES ARE NOT INSTALLED SIMULTANEOUSLY.
2. THE FOLLOWING PLANT MATERIAL MUST BE INSTALLED -
GROUNDCOVER: LIRIOPE SPICATA
3. OPTIONAL - A PERENNIAL OR ANNUAL CLIMBING VINE MAY BE PLANTED, SELECTED FROM THE FOLLOWING:
CLEMATIS (VARIOUS VARIETIES)
FIG IVY
CAROLINA JESSAMINE
CORAL HONEYSUCKLE
CORAL VINE
SILVER LACE VINE
PASSION VINE
ALLAMANDA
CYPRESS VINE
HYACINTH BEAN VINE
MANDEVILLA
MORNING GLORY
THUNBERGIA
4. EITHER DWARF DAYLILY (STELLA D'ORO, HAPPY RETURNS, LITTLE BUSINESS) OR BULBS (DAFFODIL, JONQUIL, CROCUS, GRAPE HYACINTH) MAY BE INTERPLANTED WITH LIRIOPE
5. SIZE OF MAILBOX PLANTING BED MAY NOT BE ALTERED
6. ALL PLANTING MUST BE IRRIGATED BY A FULLY AUTOMATED IRRIGATION SYSTEM

MAILBOX AND POST AVAILABLE THROUGH:

CUTLER, INC.
1707 EAST DEL AMO BLVD.
CARSON, CA 90746
310/898-3900

SPECIFY: "WHITTIER HTS/OLD GROVE MAILBOX"

MAILBOX STYLE:
CORONADO BRAND,
'WHITTIER HEIGHTS/OLD GROVE MAILBOX' - 5505Z,
BRONZE BODY W/ ANTIQUE COPPER ACCENT

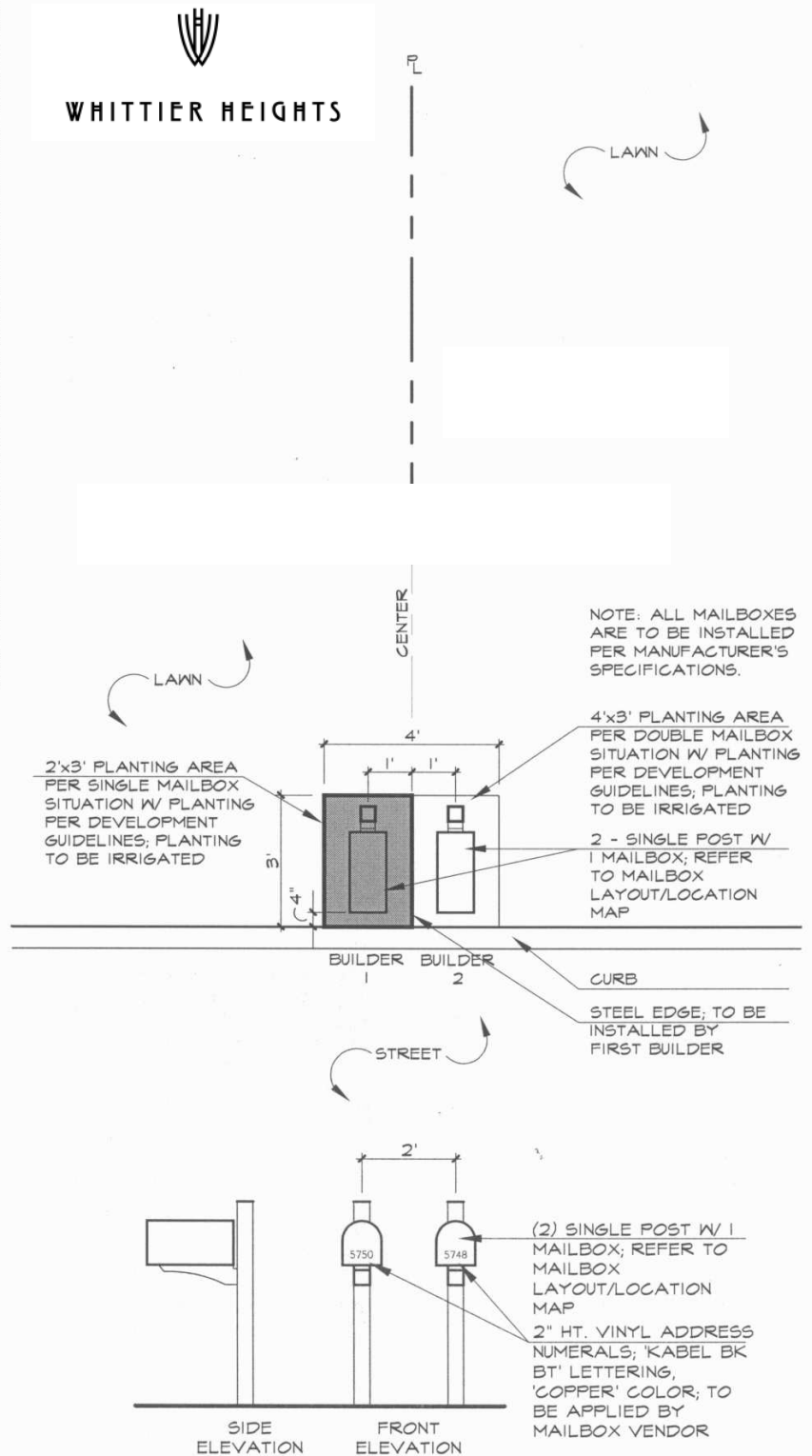
POST STYLE: 'CORONADO POST' - 5515Z, BRONZE COLOR; 'FLAT CAP FINIAL'; SINGLE MOUNT ARM

2" HT. VINYL ADDRESS NUMERALS: 'KABEL BK BT' LETTERING, COPPER COLOR; TO BE APPLIED BY MAILBOX VENDOR

COST: APPROX. \$305.00 EACH (EXCLUDES SHIPPING). CONTACT SUPPLIER FOR SHIPPING OPTIONS & PRICING

LEAD TIME: 10 DAYS - 14 DAYS

COORDINATING AN ORDER WITH OTHER BUILDERS MAY REDUCE PRODUCTION TIME AND SHIPPING COSTS



STANDARD SINGLE MAILBOX PLACEMENT AND PLANTING

MAILBOX PLANTING BED TO CONSIST OF:

1. STEEL EDGE TO BE SET W/ ONLY 1" EXPOSED ABOVE FINISH GRADE; CENTERLINE EDGING TO BE INSTALLED BY FIRST BUILDER INSTALLING A MAILBOX, IF BOTH MAILBOXES ARE NOT INSTALLED SIMULTANEOUSLY.
2. THE FOLLOWING PLANT MATERIAL MUST BE INSTALLED -
 GROUNDCOVER: LIRIOPE SPICATA
3. OPTIONAL - A PERENNIAL OR ANNUAL CLIMBING VINE MAY BE PLANTED, SELECTED FROM THE FOLLOWING:
 CLEMATIS (VARIOUS VARIETIES)
 FIG IVY
 CAROLINA JESSAMINE
 CORAL HONEYSUCKLE
 CORAL VINE
 SILVER LACE VINE
 PASSION VINE
 ALLAMANDA
 CYPRESS VINE
 HYACINTH BEAN VINE
 MANDEVILLA
 MORNING GLORY
 THUNBERGIA
4. EITHER DWARF DAYLILY (STELLA D'ORO, HAPPY RETURNS, LITTLE BUSINESS) OR BULBS (DAFFODIL, JONQUIL, CROCUS, GRAPE HYACINTH) MAY BE INTERPLANTED WITH LIRIOPE
5. SIZE OF MAILBOX PLANTING BED MAY NOT BE ALTERED
6. ALL PLANTING MUST BE IRRIGATED BY A FULLY AUTOMATED IRRIGATION SYSTEM

MAILBOX AND POST AVAILABLE THROUGH:

CUTLER, INC.
 1707 EAST DEL AMO BLVD.
 CARSON, CA 90746
 310/898-3900

SPECIFY: "WHITTIER HTS/OLD GROVE MAILBOX"

MAILBOX STYLE:
 CORONADO BRAND,
 'WHITTIER HEIGHTS/OLD
 GROVE MAILBOX' - 5505Z,
 BRONZE BODY W/ ANTIQUE
 COPPER ACCENT

POST STYLE: 'CORONADO
 POST' - 5515Z, BRONZE
 COLOR; 'FLAT CAP FINIAL';
 SINGLE MOUNT ARM

2" HT. VINYL ADDRESS
 NUMERALS; 'KABEL BK BT'
 LETTERING, COPPER
 COLOR; TO BE APPLIED
 BY MAILBOX VENDOR

COST: APPROX. \$305.00
 EACH (EXCLUDES
 SHIPPING). CONTACT
 SUPPLIER FOR SHIPPING
 OPTIONS & PRICING

LEAD TIME: 10 DAYS - 14
 DAYS

COORDINATING AN ORDER
 WITH OTHER BUILDERS
 MAY REDUCE PRODUCTION
 TIME AND SHIPPING COSTS

